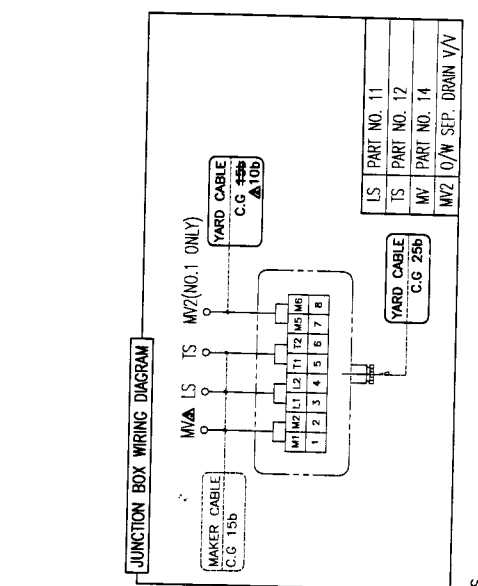
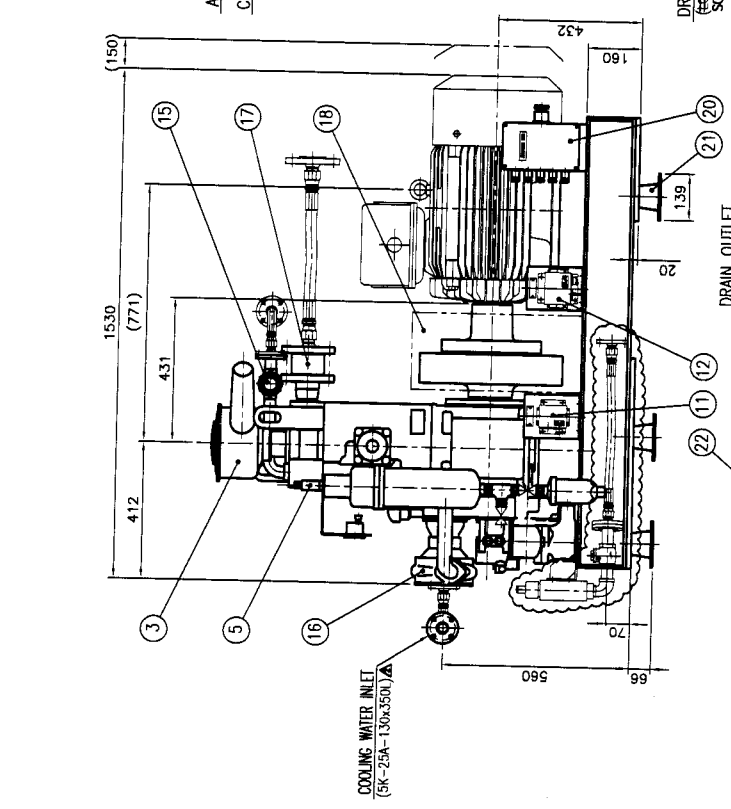
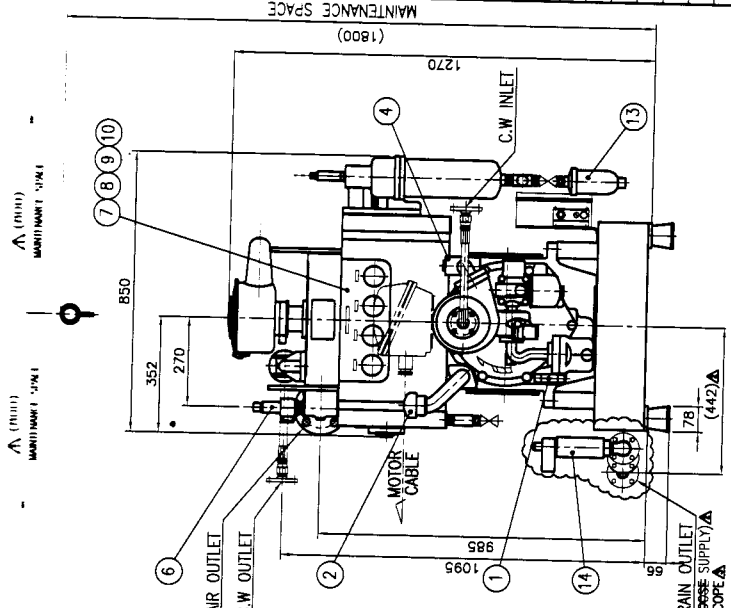


SPECIFICATIONS	
MODEL	H-73
TYPE	2 STAGES WATER COOLED
BORE (mm)	1st. 180, 2nd. 140
STROKE	80 mm
REVOLUTIONS	1800 rpm
PRESSURE	50(20.4/2.94) kg/cm ² (bar/psi)
REVOLUTIONS	1800 rpm
CAPACITANCE	150 m ² /h
POWER REQ'D	34.5 kW
WEIGHT	approx. 460 kg
VOLUME OF CRANK CASE LUBRICATING OIL	approx. 300 kg
HEAT EXCHANGER	11.5 lit
FRUIT COLOR MARKER'S NO.	29200 kcal/h
BRD. & FITTING PARTS WEIGHT	7.5807/2
TOTAL WEIGHT	approx. 740 kg
	approx. 1020 kg



RULE	ABS	CUSTOMER	STX SHIPBUILDING	NO. REQUIRED
22	CHECK VALVE (DRAIN)			1
21	FLEXIBLE MOUNTING			6
20	JUNCTION BOX			1
19	C.W. SHUT-OFF VALVE [SV]			1
18	FLYWHEEL COVER			1
17	CHECK VALVE (AIR)			1
15	WATER CHECKER			1
14	MAGNETIC VALVE [MV]			1
13	AUTO DRAIN TRAP			1
12	AIR HIGH TEMP. SWITCH [IS]			1
11	L.O. LOW PRESS. SWITCH [LS]			1
10	PRESSURE GAUGE (WATER)			1
9	PRESSURE GAUGE (OIL)			1
8	PRESSURE GAUGE (1st.STAGE)			1
7	PRESSURE GAUGE (2nd.STAGE)			1
6	SAFETY VALVE (1st.STAGE)			1
5	SAFETY VALVE (2nd.STAGE)			1
4	SAFETY VALVE (WATER)			1
3	SUCTION FILTER			1
2	OIL FILLER			1
1	OIL LEVEL GAUGE			1
PART NO.	PART NAME	Q'TY/SET	REMARK	
	CUSTOMER			
	PROJECT			
	SCALE			
	T.H. KIM			
	D.W. LEE			
	TAE HEE			
	PROJECTION			
	DWG NO.			
	1ST			
	MT-00076-6			
	GENERAL VIEW			
	NO. REQUIRED			
	2 SET			
	PROJECT			
	D-2038/40/42/45/46/48			
	TITLE			
	1/21			

* REFER TO THE FLEXIBLE HOSE DRAWING FOR ITS ARRANGEMENT

DOUGLAS