


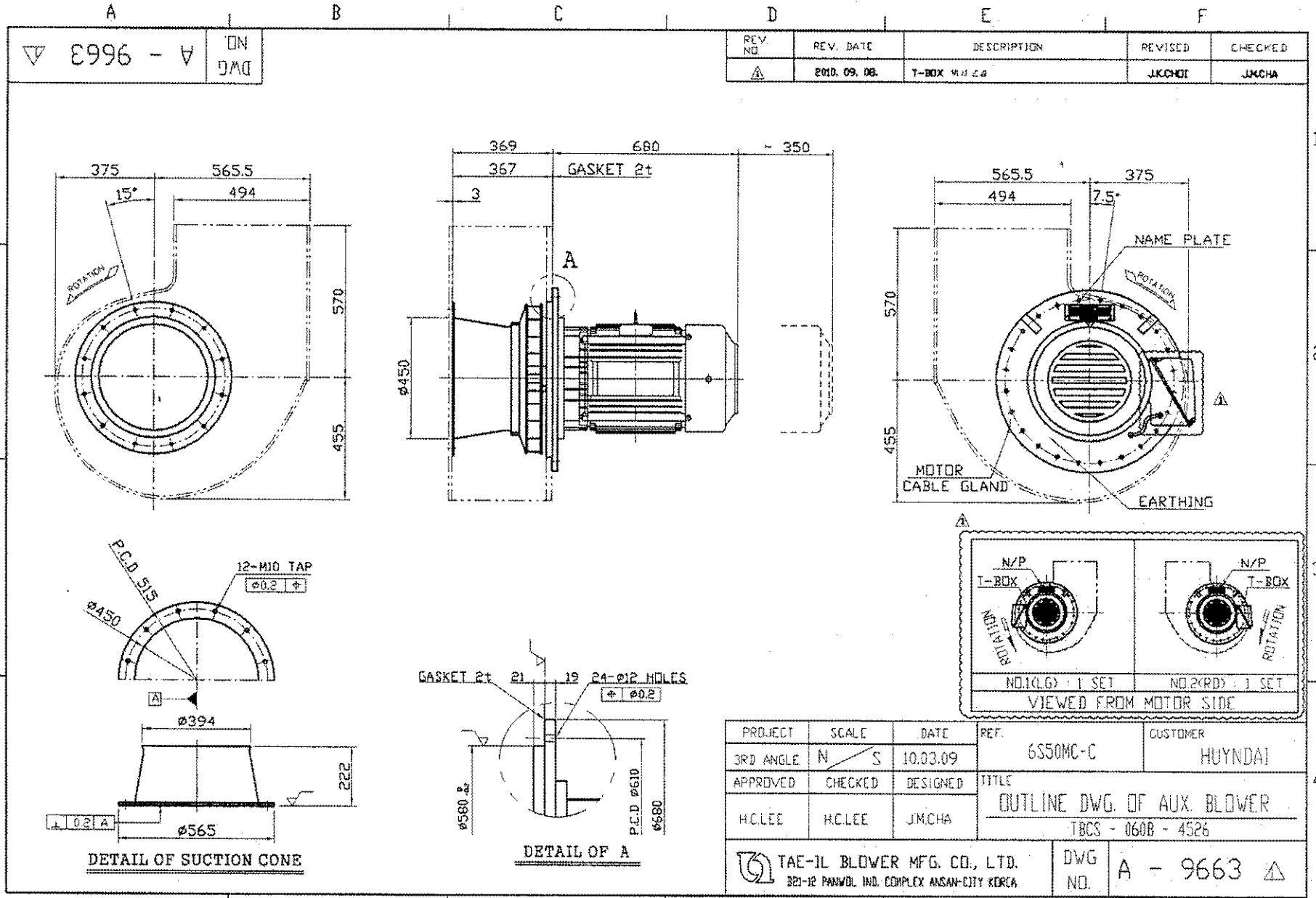
AUXILIARY BLOWER WITH INDUCTION MOTOR

CUSTOMER	HYUNDAI
SHIP NO.	SLS544/5/6/7/8/9
ENGINE NO.	AA3941/2/3/4/5/6
C L A S S	DNV
ENGINE TYPE	6S50MC-C
NO. OF PER SHIP	2 SETS / ENGINE

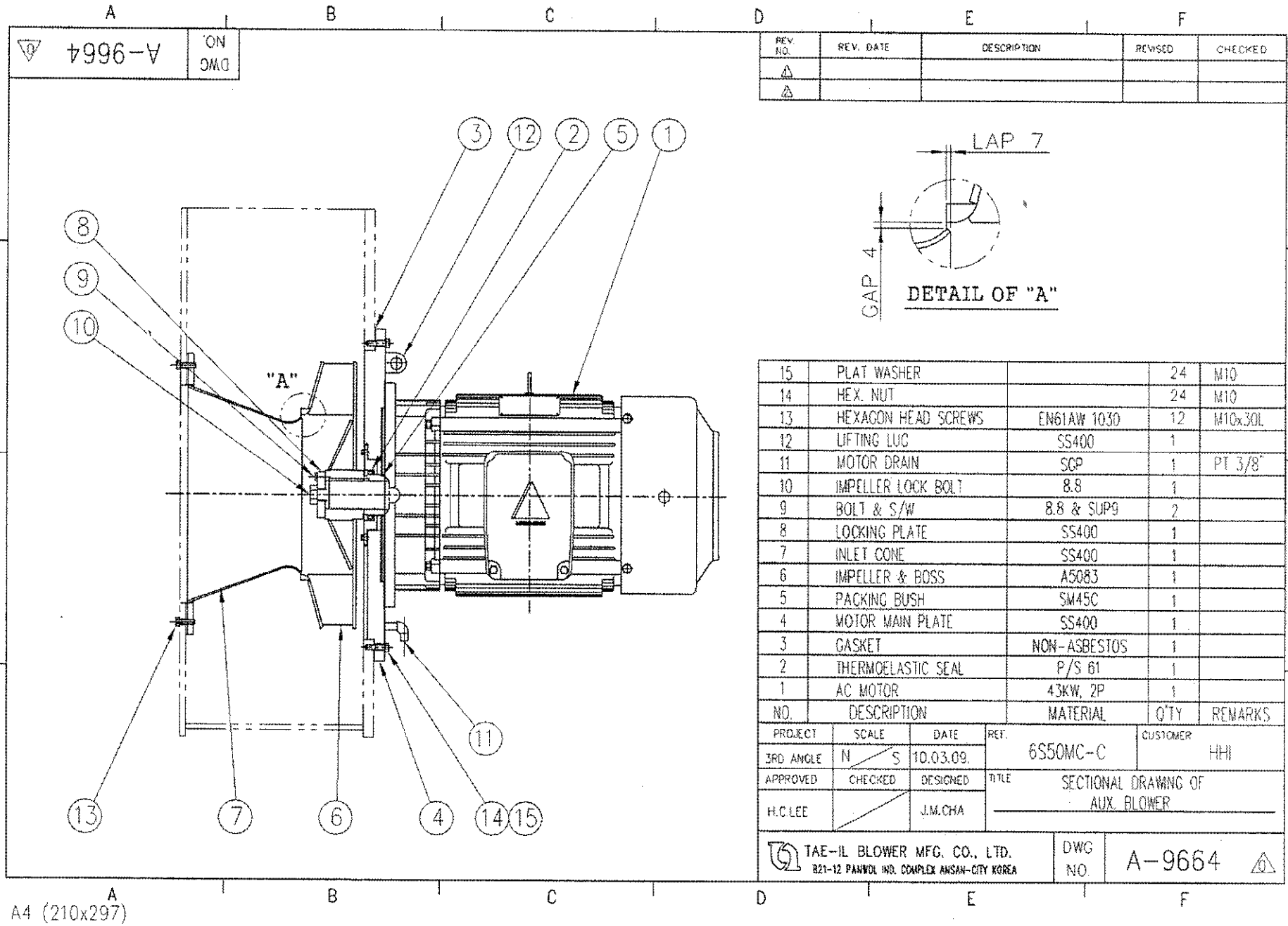
BLOWER SPEC.				MOTOR SPEC.			
T Y P E	TURBO BLOWER			M A K E R	HYUNDAI		
M O D E L	TBCS - 060B - 4526			T Y P E	HM		
DWG NO.	A - 9663 Δ			FRAME NO.	200L		
CAPACITY	1.94 / 3.32 m ³ /sec			OUTPUT / POLE	45 kW / 2 P		
STATIC PRESSURE	571 / 327 mmAq			VOLT / CYCLE	440 v / 60 HZ		
GAS TEMPERATURE	15 °C			RATED LOAD CURRENT / INSULATION.	72.1 A / F		
AIR DENSITY	1.225 - 2.1 kg/m ³			PROTECT GRADE / AMB.TEMP.	IP44 / 45 °C		
S P E E D	3560 rpm			S P E E D	3560 rpm		
W E I G H T	160 kg			W E I G H T	297 kg		
REV.	DATE	DESCRIPTION	PREP'D	CHK'D	APP'D	 TAE-IL BLOWER MFG. CO., LTD. HWASEONG, KOREA TEL (031) 350-9000 FAX (031) 353-6653	
0	10.03.09	FOR APPROVAL	J.M.CHA	H.C.LEE	H.C.LEE		
1	10.09.02	FOR WORKING	J.K.CHOI	J.M.CHA	H.C.LEE		
2	10.09.08	FOR WORKING	J.K.CHOI	J.M.CHA	H.C.LEE		
3						SERIAL NO.	09B0474
						SPEC. NO.	A10-370248-0

A4(210x297)

10-1~2



A4 (210x297)



△ 9964-A
DWC
ON
DWC

REV. NO.	REV. DATE	DESCRIPTION	REVISED	CHECKED
△				
△				

15	PLAT WASHER		24	M10
14	HEX. NUT		24	M10
13	HEXAGON HEAD SCREWS	EN61AW 10.30	12	M10x30L
12	LIFTING LUG	SS400	1	
11	MOTOR DRAIN	SCP	1	PT 3/8"
10	IMPELLER LOCK BOLT	8.8	1	
9	BOLT & S/W	8.8 & SUP9	2	
8	LOCKING PLATE	SS400	1	
7	INLET CONE	SS400	1	
6	IMPELLER & BOSS	A5083	1	
5	PACKING BUSH	SM45C	1	
4	MOTOR MAIN PLATE	SS400	1	
3	GASKET	NON-ASBESTOS	1	
2	THERMOELASTIC SEAL	P/S 61	1	
1	AC MOTOR	43KW, 2P	1	

NO.	DESCRIPTION	MATERIAL	Q'TY	REMARKS
PROJECT	SCALE	DATE	REF.	CUSTOMER
3RD ANGLE	N / S	10.03.09.	6S50MC-C	HHR
APPROVED	CHECKED	DESIGNED	TITLE	
H.C.LEE		J.M.CHA	SECTIONAL DRAWING OF AUX. BLOWER	

TAE-IL BLOWER MFG. CO., LTD.
821-12 PANNOL IND. COMPLEX ANSAN-CITY KOREA
DWC NO. A-9664 △

A4 (210x297)

TAE-1L BLOWER

EXPECTED PERFORMANCE CURVE

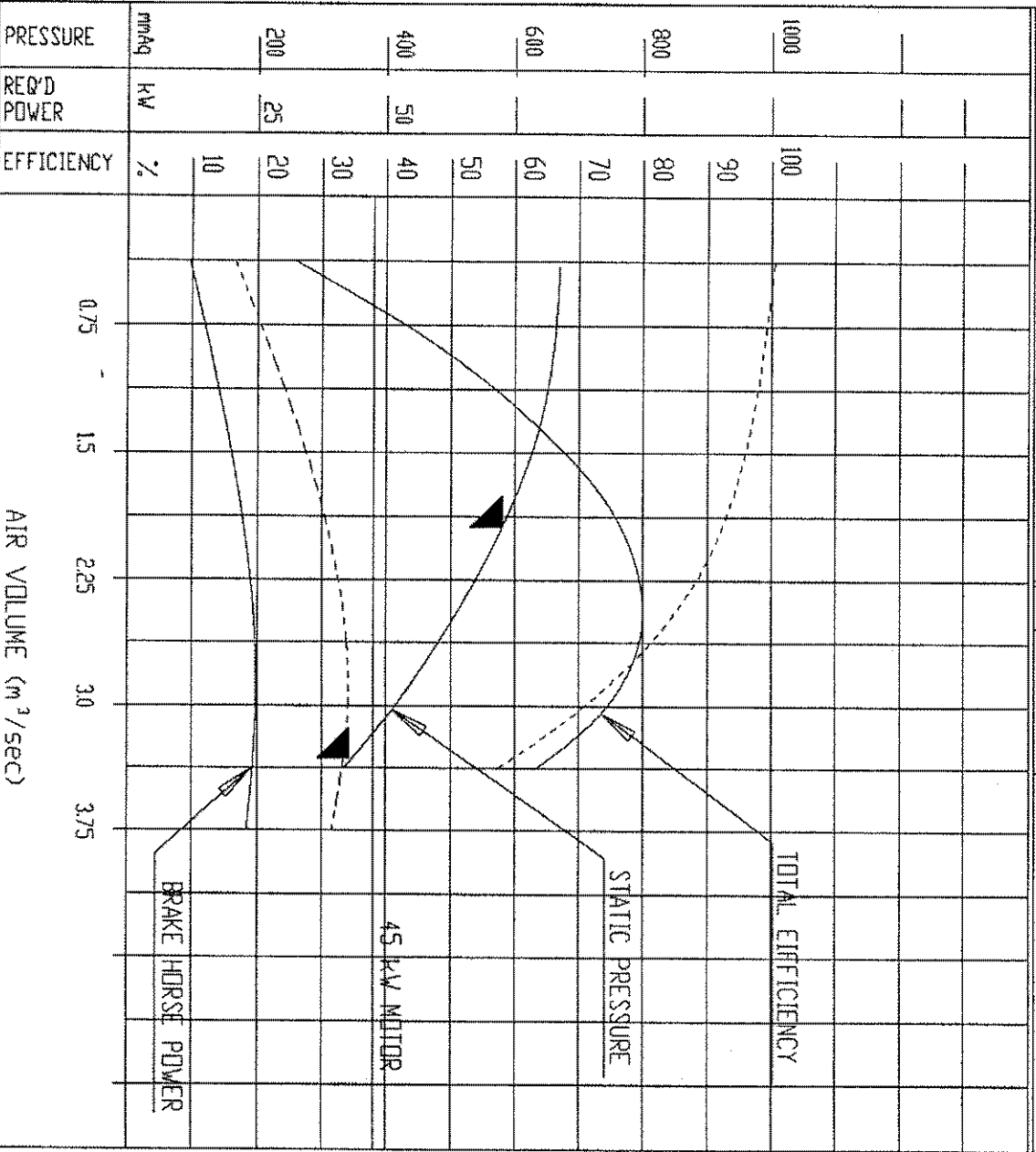
DOCUMENT NO.

REV.

CUSTOMER	HYUNDAI	SERIAL NO.	- 2 SETS
SHIP NO.	SISS44-549	EQUIP. NAME	AUXILIARY BLOWER
ENG. NO.	AA394I-3946	SHIP OWNER	-
ENGINE TYPE	6S50MC-C	REF. DWG NO.	A - 9663 Δ

DESIGN SPECIFICATION

TYPE	TURBO BLOWER	GAS HANDLED	AIR
MODEL	TBCS - 060B - 4526	GAS DENSITY	1.225 - 21 kg/m ³
AIR VOLUME	194 / 332	GAS TEMP.	15 °C
STATIC PRESS.	571 / 327	MOTOR TYPE	HM
SPEED	3560	MOTOR OUTPUT	45 KW
EFFICIENCY	(MAX) 80 %	MOTOR POWER SUPPLY	440 V 3 PH 60 HZ



NOTES

ρ : 1.225 kg/m³
 γ : 2.1 kg/m³

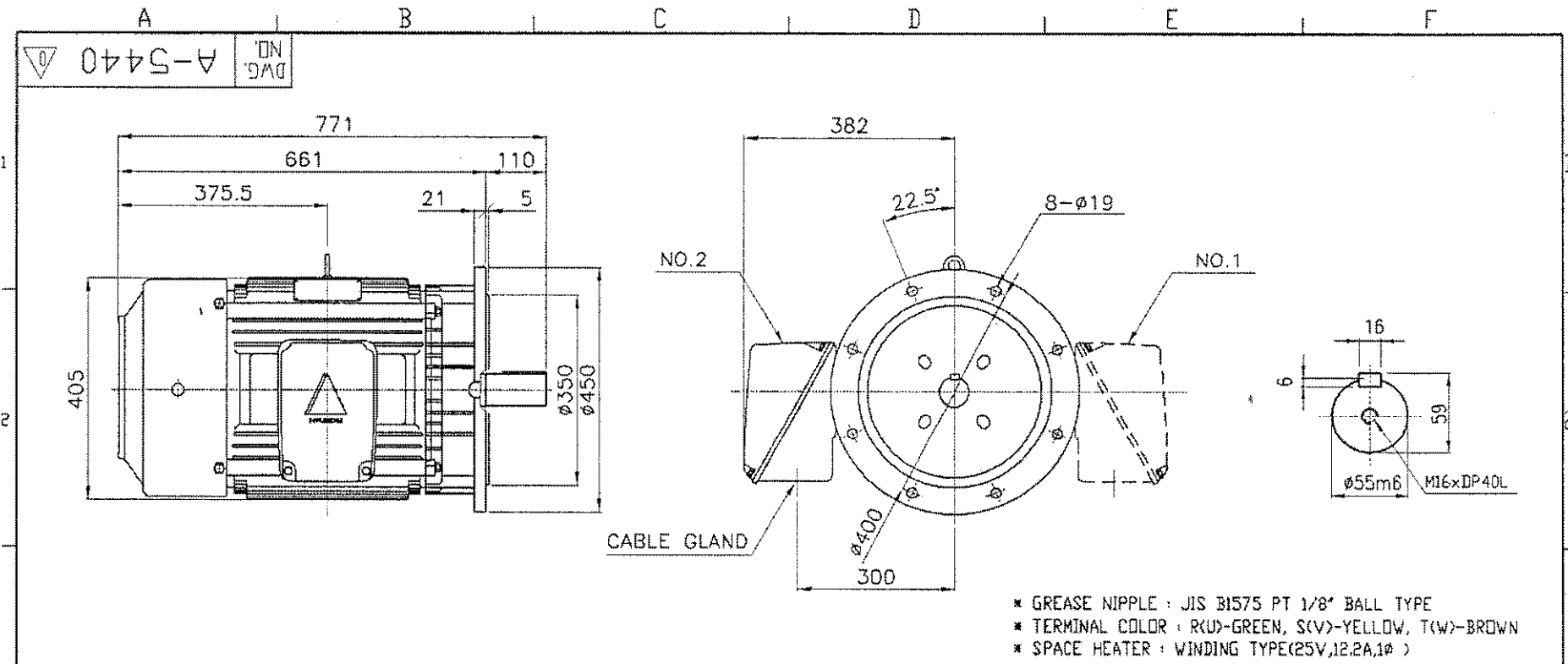
DATE	1003.09.
PREPARED	JHCHA
CHECKED	HCLIE
APPROVED	HCLIE

TLS D301-2

TAE-1L BLOWER MFG. CO., LTD

A4K210x297J

10-1-5



- * GREASE NIPPLE : JIS B1575 PT 1/8" BALL TYPE
- * TERMINAL COLOR : R(U)-GREEN, S(V)-YELLOW, T(W)-BROWN
- * SPACE HEATER : WINDING TYPE(25V,12.2A,1 ϕ)

SPECIFICATIONS

TYPE	HM	POLES	2 P	APPROX. WEIGHT	297	STARTING CURRENT	468.6 A	STARTING METHODS	D.O.L
FRAME No.	200L	SPEED	3560 rpm	MOUNTING	B5	POWER FACTOR	89.0 %	CABLE GLAND	30Cx1EA
PHASE & FREQUENCY	3 ϕ 60 Hz	DRIVE	DIRECT	PROTECTION GRADE	IP44	EFFICIENCY	92.0 %	MAKER	HYUNDAI
VOLTAGE	440 V	INSULATION CLASS	F	RATING	CONT.	BEARING(FRONT)	#6212ZC3		
OUTPUT	45 kW	AMBIENT TEMP.	45 °C	RATING CURRENT	72.1 A	BEARING(REAR)	#6211ZC3		

3						PROJECT	SCALE	DATE	REF. DWG.	CUSTOMER
2						3RD ANGLE	N / S	06.05.10		HYUNDAI
1						APPROVED	CHECKED	DESIGNED	TITLE	
NO	DESCRIPTION	DIMENSION	MT'L	Q'TY	REMARKS	H.C.LEE	H.S.LEE	K.W.LEE	OUTLINE DWG. OF MOTOR	
									45kW - 2P - 200L - HM	
						TAE-IL BLOWER MFG. CO.,LTD.			DWG. NO.	A-5440
						BEI-12 PANVOL 3RD. COMPLEX ANSAN-SI, KOREA				

A4 (210x297)-FE-A0-1994(1.000)

TAE-IL BLOWER MFG.CO.,LTD.