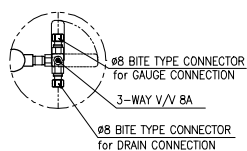
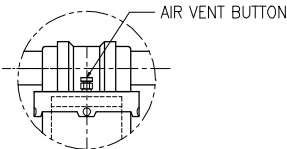


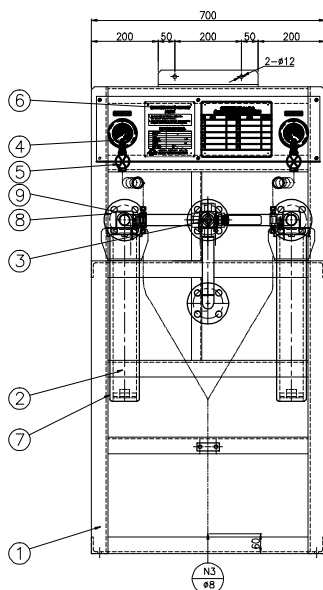
**PLAN VIEW**



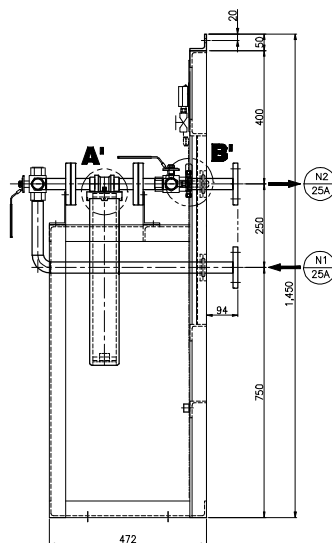
**DETAIL B'**  
**SCALE 2:1**



**DETAIL A'**  
**SCALE 3:1**



**FRONT VIEW**



**SIDE VIEW**

**DESIGN DATA**

CUSTOMER		SHINAsb	
HULL NO.		SS44/45/46/47/48/49	
MODEL		REH08-01	
NO. OF SET		1 Set(s)/Ship	
PH-VALUE		7.0 ~ 8.5	
RULE		NOT APPLICATION	
PRESSURE	DESIGN	4.4	kg/cm <sup>2</sup>
	WORKING	4.0	kg/cm <sup>2</sup>
HYDRO. TEST PRESSURE		6.6	kg/cm <sup>2</sup>
PRESSURE DROP		0.1	kg/cm <sup>2</sup>
PAINTING	PIPE & BODY	NO PAINTING(SUS304)	
	SEAT	MUNSELL NO 7.5 BG 7/2	
CAPACITY		1000	L /h
WEIGHT (DRY/WET)		65 / 80	Kg

N3	DRAIN	Ø8	BC	2	PCS	WITH COPPER TUBE & VALVE
N2	WATER OUTLET	5K-25A	SUS304	1	PCS	WITH FLANGE
N1	WATER INLET	5K-25A	SUS304	1	PCS	WITH FLANGE
No	NAME	DESCRIPTION	MATERIAL	Q'TY	UNIT	REMARK

**NOZZLE SCHEDULE**

**\*NOTE**

1. DOLOMITE FILTER IS INSTALLED ONLY No.1 FILTER HOUSING FOR YARD WORKING.
2. FOR TRIAL OPERATING OR USING THIS EQUIPMENT, USE THE No.1 FILTER HOUSING.(INSTALLED THE DOLOMITE FILTER)

9	3-WAY VALVE	1/4"	BC	2	PCS	
8	FLANGE	10K-25A	SUS304	8	SET	
7	FILTER HOUSING	DOL008-100	SUS304	2	SET	
6	SPEC' PLATE		BC PHENOL / ACRYLIC	2	EA	
5	ROOT VALVE	1/4"	BC	2	PCS	
4	PRESSURE GAUGE	#60,1/4"p-10kg/cm <sup>2</sup>	SUS304	2	PCS	LIQUID FILLED TYPE
3	3-WAY VALVE	1"	SUS304	2	PCS	T-TYPE
2	DOLOMITE FILTER	DOL008-010	PE	2	EA	
1	SEAT	50X50X61	SS400	1	SET	
No	NAME	DESCRIPTION	MATERIAL	Q'TY	UNIT	REMARK



**SAMKUN CENTURY CO., LTD**

<b>TITLE</b>	<b>ASSEMBLY for REHAUDING FILTER</b>				
<b>PROJECT</b>	<b>SS44/45/46/47/48/49</b>				
<b>DWG NO</b>	<b>SS44-SL-REH01-GA00</b>				
3RD ANGLE PROJECTION	PAGE	<b>1 of 4</b>	DATE	<b>2011.09.19</b>	
SIZE	A4	DRAWING BY	CHECKED BY	REVIEWED BY	APPROVED BY
SCALE	N	E.H.Nam	S.H.Kang	J.C.Kim	T.D.Kim