

9.1 PRESSURE DROP INDICATOR

9.1.1 Functions of the indicator

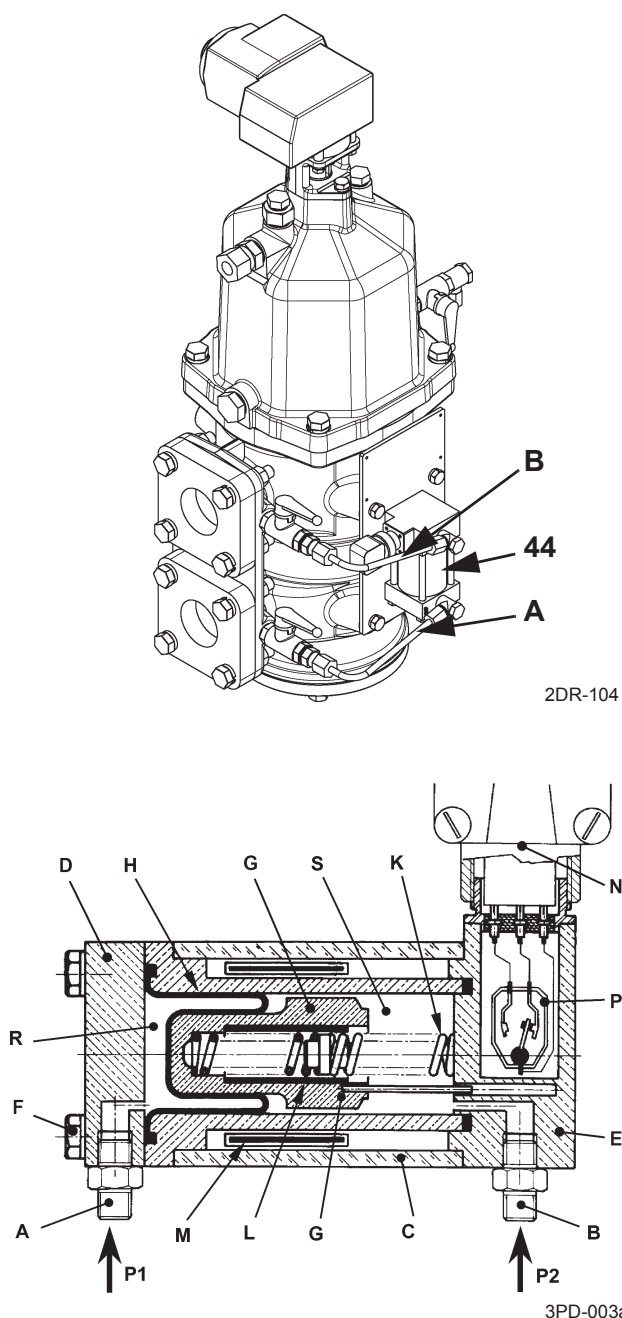
1. Indicates the pressure drop across the filter (P1-P2).
2. Gives an alarm if the pressure drop across the filter for any reason reaches a critical value, BEFORE the filter may clogg.

9.1.1.1 Design

The pressure drop indicator (44) is provided with visual and electrical signals.

It consists of the following components:

- C Window
- D Connecting flange for filter inlet
- E Connecting flange for filter outlet
- F Assembling rods
- G Piston
- H Diaphragm (Flexible seal)
- K Calibrated spring
- L Magnetic inner ring
- M Magnetic outer ring
- N Electrical connector
- P Probe with flexible strip switch.



9.1.2 Operating description

9.1.2.1 Description

The pressure drop indicator (44) is fed with oil through the pipes A and B.

The pipe A leads into the system at filter inlet (P1 pressure).

The pipe B leads into the system at filter outlet (P2 pressure).

9.1.2.2 Normal pressure drop - ΔP Norm

With the Alfa Laval Moatti filter, which is continuously backflushed, the pressure drop P1-P2 stay constant during normal operation.

That constant pressure drop may vary from 0.2 to 0.7 bar according to the installation.