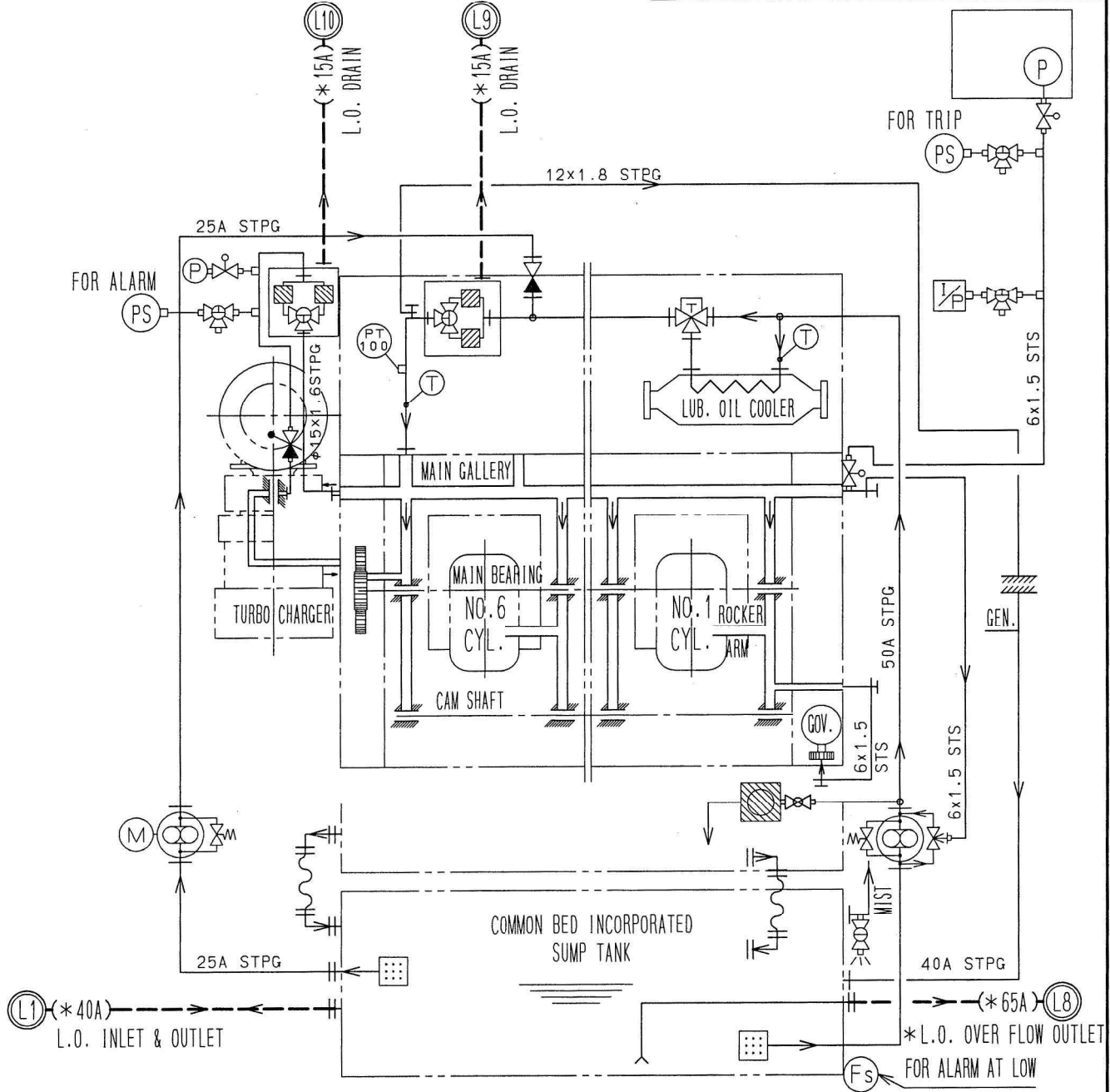


	GEAR PUMP		FLANGED GLOBE VALVE		FLANGED JOINT		LOOP PIPING		DIFF. PRESS. GAUGE
	HAND PUMP		SCREWED NEEDLE VALVE		BLANK FLANGE		O.D. OUT DIA. OF PIPE		OIL PRESS. SIGNAL
	ELECTRIC MOTOR		FLANGED CHECK VALVE		SPECTACLE FLANGE		STPG STEEL PIPE		PRESSURE SWITCH
	STRAINER		SWING CHECK VALVE		UNION TYPE JOINT		STS STEEL PIPE		TEMPERATURE SWITCH
	GLACIER FILTER		BUILT-IN CHECK VALVE		BALL TYPE JOINT		CAPILLARY TUBE		FLOAT SWITCH
	STRAINER (PUNCH HOLES)		PRESS. REGULAT. VALVE		BOSS				DIFF. PRESS. SWITCH
	SCREWED BALL VALVE		THERMOSTATIC VALVE		ORIFICE		THERMOMETER		PRESSURE SENSOR
	THREE-WAY COCK		SAFETY VALVE		FLEXIBLE JOINT		PRESSURE GAUGE		THERMO SENSOR

CONNECTION FOR SWITCH TEST (PS) FROM ENG.
FEMALE SCREW G1/4 FOR TEST



MODEL: 6N18 (A) L PIPING LAYOUT
LUBRICATING OIL SYSTEM

REMARKS

- 1) PIPES AND FITTINGS MARKED *IN THIS DRAWING ARE NOT SUPPLIED BY YANMAR.
- 2) CHARACTERS IN (C) ARE SAME AS ONES OF PIPE CONNECTION IN OUTLINE DRAWING.

ヤンマー株式会社 YANMAR CO., LTD.	DWG. No.	P3-46673-012C
------------------------------	-------------	---------------