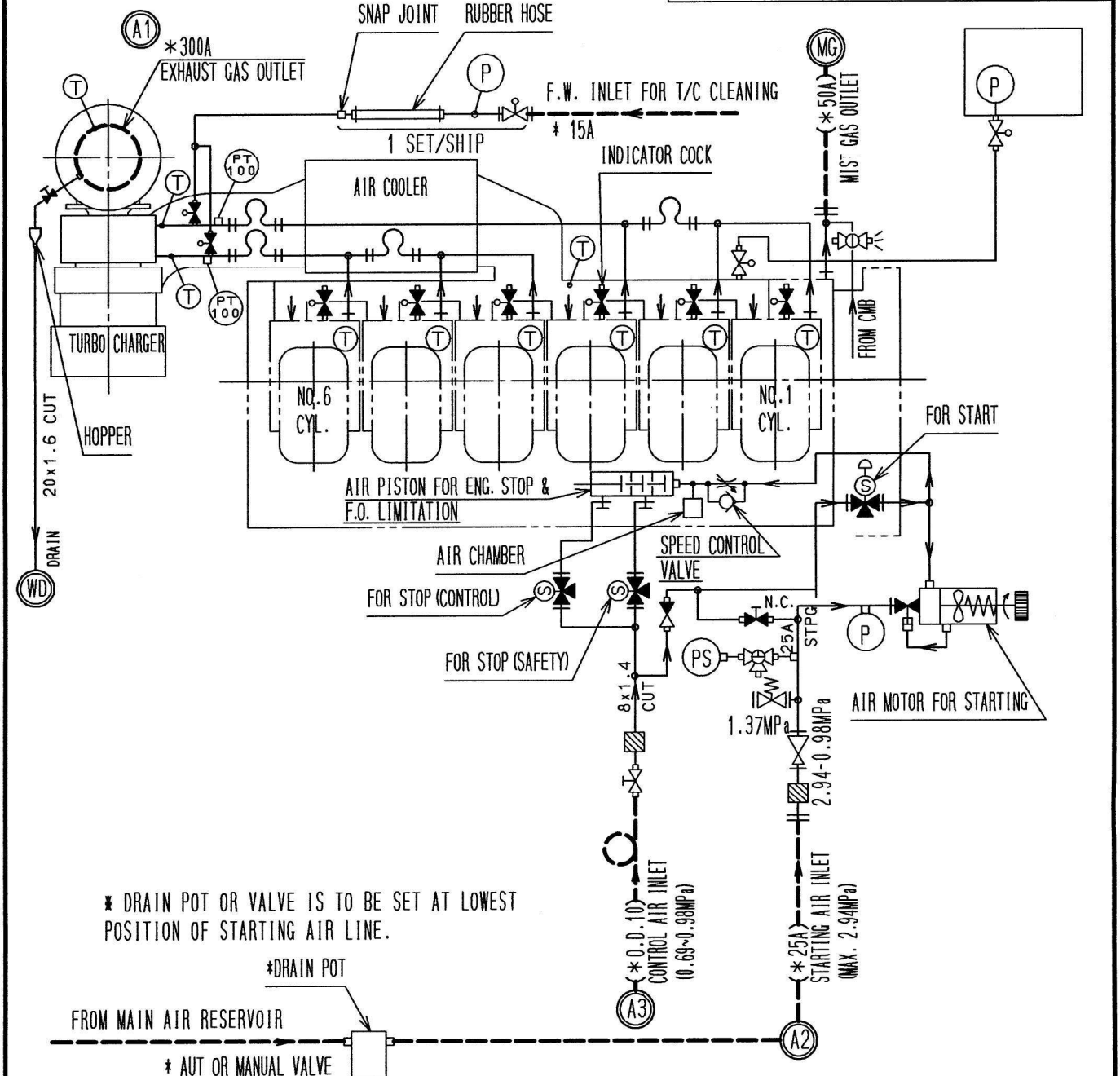
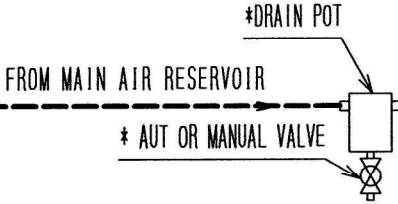


	SCREWED COCK		SOLENOID VALVE		LOOP PIPING		THERMOMETER		
	SCREWED BALL VALVE		FLANGED JOINT		OUT DIA. OF PIPE		PRESSURE GAUGE		
	SCREWED GLOBE VALVE		BLANK FLANGE		STEEL PIPE		TEMPERATURE SWITCH		
	SCREWED NEEDLE VALVE		UNION TYPE JOINT		COPPER TUBES		PRESSURE SENSOR		
	PRESS. REGULAT. VALVE		BALL TYPE JOINT		CAPILLARY TUBE		THERMO SENSOR		
	SAFETY VALVE		BOSS						
	BLOCKING VALVE		EXPANSION JOINT						
	PRESS. REDUCING VALVE		FLEXIBLE JOINT						

CONNECTION FOR SWITCH TEST (PS) FROM ENG.
FEMALE SCREW G1/4 FOR TEST



* DRAIN POT OR VALVE IS TO BE SET AT LOWEST POSITION OF STARTING AIR LINE.



MODEL: 6N18 (A) L PIPING LAYOUT
EXH. GAS & SUCTION AIR SYSTEM

- REMARKS
- 1) PIPES AND FITTINGS MARKED * IN THIS DRAWING ARE NOT SUPPLIED BY YANMAR.
 - 2) CHARACTERS IN © ARE SAME AS ONES OF PIPE CONNECTION IN OUTLINE DRAWING.

ヤンマー株式会社
YANMAR CO., LTD.

DWG. No. P3-46673-709B