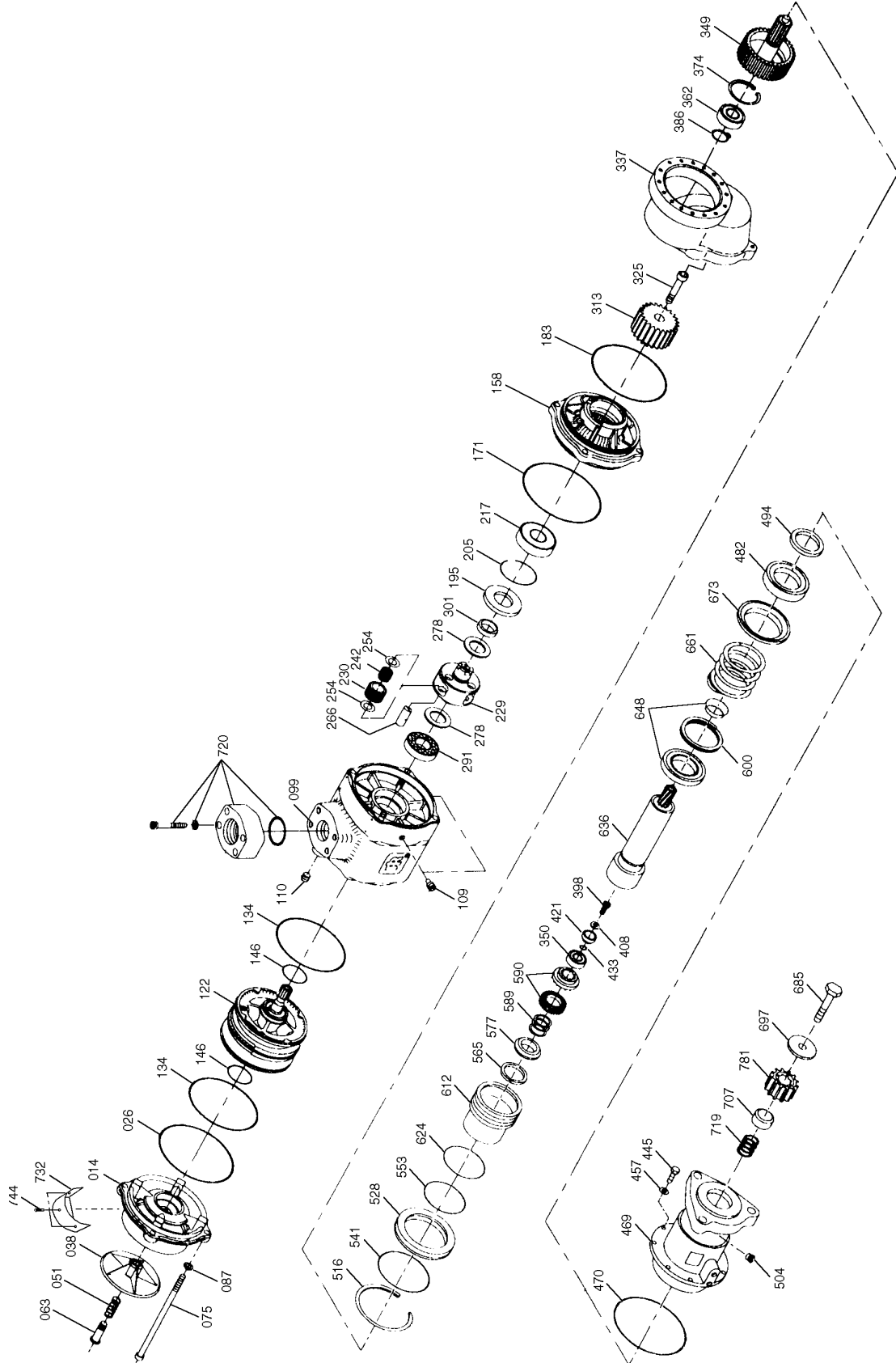


L23/30H



08028-0D/H5250/94.08.12

Plate Page 3 (3)	Turbine Starter	51309-01H
---------------------	------------------------	------------------

L23/30H

Item No.	Qty.	Designation	Benævnelse	Item No.	Qty.	Designation	Benævnelse
504	1/S	Drive housing vent plug	Afluftningsprop for drivgearhus	768		Spare parts kit, incl. item 026, 134, 146, 171, 183, 195, 205, 217, 254, 278, 291, 301, 470, 516, 541, 553, 624, 685 and 697	Reservedelssæt inkl. item 026, 134, 146, 171, 183, 195, 205, 217, 254, 278, 291, 301, 470, 516, 541, 553, 624, 685 og 697
516	1/S	Bulkhead retainer	Skotholder				
528	1/S	Bulkhead kit	Skotsæt				
541	1//S	Outer bulkhead o-ring	Ydre skot o-ring				
553	1/S	Inner bulkhead o-ring	Indre skot o-ring				
565	1/S	Clutch spring cup retainer	Fjedertallerken holder				
577	1/S	Clutch spring cup	Fjedertallerken				
589	1/S	Clutch spring	Koblingsfjeder				
590	1/S	Clutch jaw kit	Koblingssæt				
600	1/S	Large drive shaft bearing retainer	Stor lejespændering for drivaksel				
612	1/S	Piston kit	Stempelsæt				
624	1/S	Piston o-ring	Stempel o-ring				
636	1/S	Drive shaft kit	Drivakselsæt				
648	1/S	Rear drive shaft bearing	Bagerste drivakselleje				
661	1/S	Piston return spring	Stempel returffjeder				
673	1/S	Seat	Sædering				
685	1/S	Drive pinion retaining screw	Tandhjulsspændeskrue				
697	1/S	Drive pinion washer	Tandhjulsskive				
781	1/S	Drive pinion	Tandhjul				
707	1/S	Pinion spring sleeve	Tandhjulbøsning				
719	1/S	Pinion spring	Tandhjulffjeder				
720	1/S	Inlet flange kit	Tilgangsflangesæt				
732	3/S	Cover	Dæksel				
744	1/S	Self drilling screws	Selvborende skruer				
756	1/E	Turbine starter, complete	Turbinestarter, komplet				

08028-0D/H5250/94.08.12

When ordering spare parts, see also page 500.50.

Ved bestilling af reservedele, se også side 500.50.

* = Only available as part of a spare parts kit.
 Qty./E = Qty./Motor
 Qty./S = Qty./Turbine Starter

* = Kun tilgængelig som en del af et reservedelssæt.
 Qty./E = Qty./Motor
 Qty./S = Qty./Turbinestarter