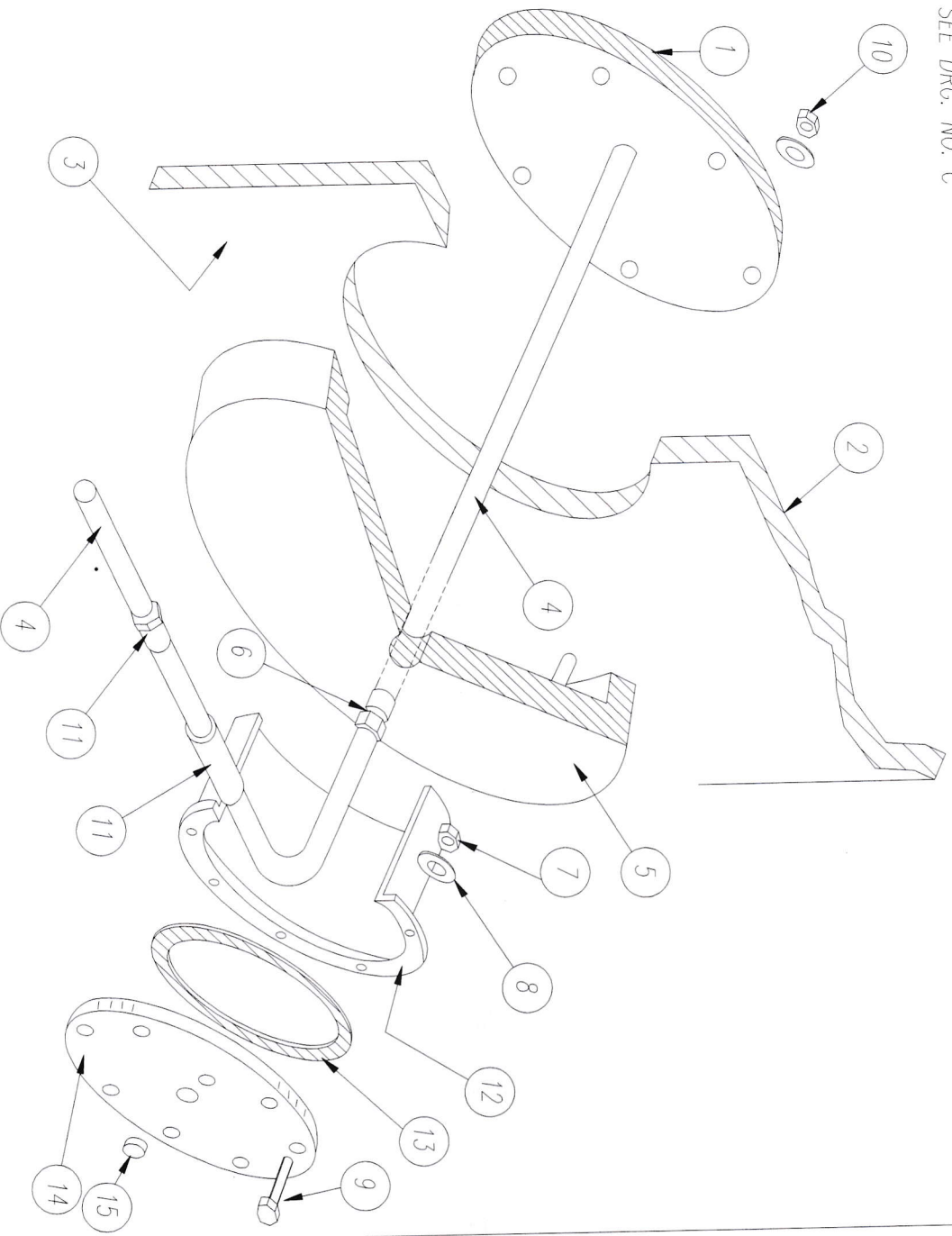
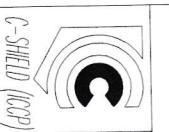


NOTES:
FOR FURTHER DETAILS OF A TYPICAL
ELLIPTICAL RECESSED ANODE ASSEMBLY
SEE DRG. NO. C

FOR CORRECT INSTILLATION INSTRUCTIONS FOR THIS
ANODE TYPE ALWAYS CONSULT THE CATHELCO
C-SHIELD MANUAL SUPPLIED



ITEM No.	DESCRIPTION
1	RESIN ANODE HOLDING ASSEMBLY INCORPORATING THE ANODE ELEMENT
2	DIELECTRIC SHIELD MASTIC COATING REFER TO DRG. NO. C1197
3	HULL PLATE SHOWING RECESS FOR INSERTION OF ELLIPTICAL ANODE
4	25mm CORE CABLE X 3m EXTENTION TO B.S. 638 PART 4
5	ANODE DOUBLER / MOUNTING PLATE WELD INTO HULL RECESS. C/W STUDS
6	BRASS CABLE GLAND SUPPLIED WITH DOUBLER / MOUNTING PLATE
7	M20 STEEL NUT FOR CONFERRDAM ASSEMBLY 8 x NUTS REQUIRED
8	M20 STEEL WASHER FOR CONFERRDAM ASSEMBLY 8 x WASHERS REQUIRED
9	M20 STEEL BOLT FOR CONFERRDAM ASSEMBLY 8 x BOLTS REQUIRED
10	M12 PLATED NUTS & BOLTS FOR ANODE TO DOUBLER PLATE ASSEMBLY
11	CONFERRDAM CABLE GLAND MOUNTING SLEEVE C/W CABLE GLAND
12	6" NOMINAL BORE FLANGED CONFERRDAM ASSEMBLY
13	NEOPRENE SEALING GASKET FOR CONFERRDAM ASSEMBLY
14	CONFERRDAM ASSEMBLY TOP COVER 6" FLANGE.
15	CONFERRDAM FILLING / INSPECTION BRASS PLUG



CATHELCO LIMITED
MARINE HOUSE, 18 HIPPER STREET SOUTH,
CHESTERFIELD, DERBYSHIRE, S40 1SS, UK.

REV:	1	DATE:	19.04.01	MODIFICATION:	RE-DRAWN IN AUTOCAD
------	---	-------	----------	---------------	---------------------

TITLE:
**EXPLODED DIAGRAM OF TYPICAL
ELLIPTICAL RECESSED ANODE INSTALLATION**

PA NO.:	DATE:	SCALE:	NTS
17.01.93			
DRAWN: JRH	CHECK: DP	DRG NO: M1000	REV: 1