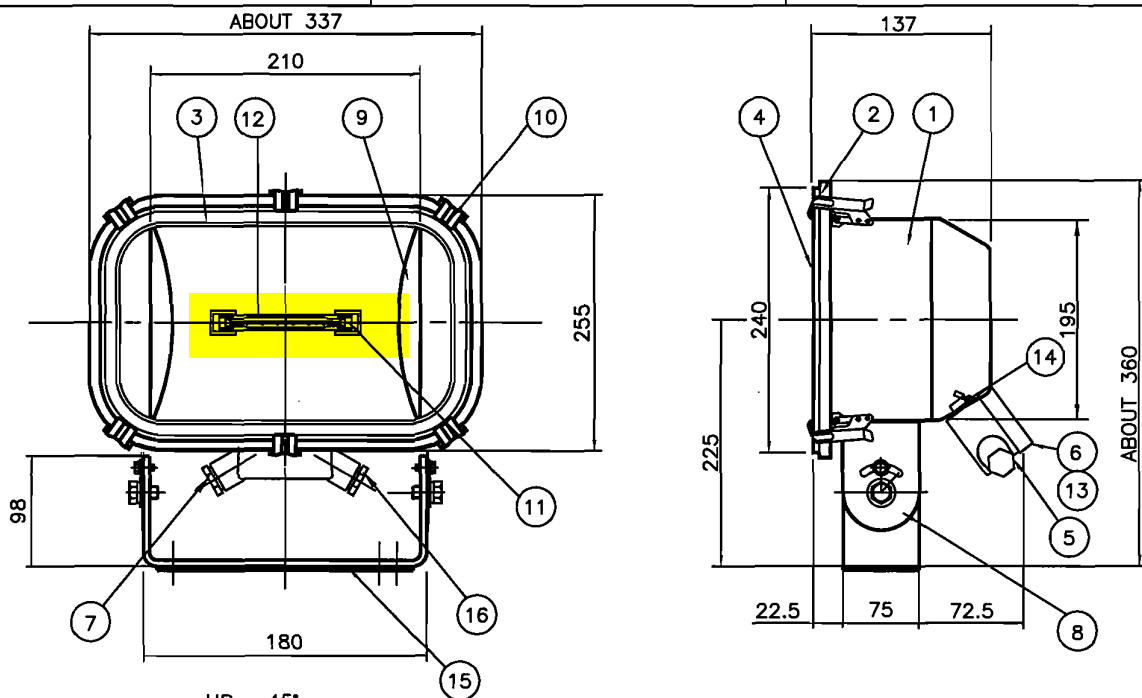
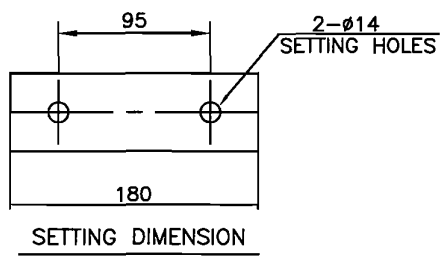


CAPACITY	SYMBOL/ SERIAL NO.	CIRCUIT DIAGRAM
AC 220V	HFL 500	
500W x 1		



VERTICAL ANGLE [UP : 45°
DOWN : 45°



16	BLIND PLUG	POLYCAR-BONATE	1	M24	8	ARM	STAINLESS STEEL 316	1	
15	RUBBER SEAT	RUBBER	1	5t	7	CABLE GLAND	BRASS	1	Ø14-17.5
14	INSIDE EARTH BOLT	BRASS	1	M5	6	TERMINAL BOX COVER	PBT	1	
13	TERMINAL BLOCK	NYLON	1	3P	5	TERMINAL BOX	PBT	1	
12	HALOGEN LAMP	-	1		4	FRONT GLASS	GLASS	1	
11	LAMP HOLDER	CERAMIC	1	R7S	3	GLOBE PACKING	SILICONE	1	
10	LATCH	STAINLESS STEEL 316	6		2	GLOBE FRAME	STAINLESS STEEL 316	1	
9	REFLECTOR	ALUMINUM	1		1	BODY	STAINLESS STEEL 316	1	
NO	NAME OF PARTS	MATERIAL	Q'TY	REMARKS	NO	NAME OF PARTS	MATERIAL	Q'TY	REMARKS

APPROVED	B. K. KIM	UNIT	MM	TITLE; HALOGEN FLOOD LIGHT FOR MARINE USE					
CHECKED		SCALE	N/S						
DRAWING	T. R. SON	COLOR	N-9.3						
DATE	2003.01.02	IP	67						
				MODEL NO.	PF50H-20UWCFN-BLP	WEIGHT	5.3Kg		
				DWG NO.	L46580003	SHEET NO.	37		